



C. MARIANI ANTIQUES
RESTORATION & CUSTOM

1301 Harrison Street San Francisco CA 94103
www.cmarianiantiques.com

Contact: Claudio Mariani
claudio@cmarianiantiques.com Tel
415.541.7868 ~ Fax 415.487.3950



England 3299 M00571

An Early 19th Century Regency Mahogany Wine Cooler
with pagoda lid, en tombeau body with reeded radius corners,
and raised on lions' paw feet

Height: 20"; Width: 26"; Depth: 18 1/4"



C. MARIANI ANTIQUES
RESTORATION & CUSTOM

1301 Harrison Street San Francisco CA 94103
www.cmarianiantiques.com

Contact: Claudio Mariani
claudio@cmarianiantiques.com Tel
415.541.7868 ~ Fax 415.487.3950



England 3299 M00571

A 19th Century English Regency Tortoiseshell Tea Caddy,
with pagoda lid and bombé form fitted with two lidded interior
compartments, one for green tea and the other for black,
embellished with pewter and bone banding, all raised on bone
flattened bun feet

Height: 20"; Width: 26"; Depth: 18 1/4"



England 3299 M00571

An Exceptional and Rare English Regency Pressed Tortoiseshell Tea Caddy, in the Neoclassical taste, the pagoda cover above a serpentine form, fitted with two lidded

compartments, the whole raised on bone ball feet

Height: 20"; Width: 26"; Depth: 18 1/4"



England 3299 M00571

An English 19th Century Tortoiseshell Tea Caddy of Unusual Undulating Form, with sterling escutcheon and medallion, bone banding fitted with two interior conforming



C. MARIANI ANTIQUES RESTORATION & CUSTOM

1301 Harrison Street San Francisco CA 94103
www.cmarianiantiques.com

Contact: Claudio Mariani
claudio@cmarianiantiques.com Tel
415.541.7868 ~ Fax 415.487.3950

compartments, one for green tea and one for black, all above a
flaring crenelated skirt

Height: 20"; Width: 26"; Depth: 18 1/4"



England 3299 M00571

A 19th Century Cut Crystal and Gilt Cave a Liqueur Set, the presentation box with folding lid and the interior featuring secured cordial glasses and flacons

Height: 20"; Width: 26"; Depth: 18 1/4"



England 3299 M00571

An Italian 17th Century Baroque, Walnut “Bible Box”
retaining its original iron hardware including lock, key, and side

handles, and carved with acanthus leave corners centered with fielded panels and below a fluted frieze, with the whole raised on lions paw feet

Height: 20"; Width: 26"; Depth: 18 1/4"



England 3299 M00571

A Unique 19th Century English Tortoiseshell Sewing Box,
the rectangular form with canted corners, the top centered by a



C. MARIANI ANTIQUES RESTORATION & CUSTOM

1301 Harrison Street San Francisco CA 94103
www.cmarianiantiques.com

Contact: Claudio Mariani
claudio@cmarianiantiques.com Tel
415.541.7868 ~ Fax 415.487.3950

silver medallion with inscription, ebony banding, silver stringing
and sides each adorned with distinctive ebony ring handles all
raised on bone bun feet

Height: 20"; Width: 26"; Depth: 18 1/4"



England 3299 M00571

A 19th Century English Regency Tortoiseshell Tea Caddy,



C. MARIANI ANTIQUES RESTORATION & CUSTOM

1301 Harrison Street San Francisco CA 94103
www.cmarianiantiques.com

Contact: Claudio Mariani
claudio@cmarianiantiques.com Tel
415.541.7868 ~ Fax 415.487.3950

with pagoda lid centered with silver medallion, serpentine front,
ebony banding, silver escutcheon and stringing and the interior
fitted with two lidded compartments

Height: 20"; Width: 26"; Depth: 18 1/4"



C. MARIANI ANTIQUES
RESTORATION & CUSTOM

1301 Harrison Street San Francisco CA 94103
www.cmarianiantiques.com

Contact: Claudio Mariani
claudio@cmarianiantiques.com Tel
415.541.7868 ~ Fax 415.487.3950



England 3299 M00571

A Late 18th Century English Sable Tortoiseshell Decagonal Tea Caddy, accented with pewter stringing and bone banding, the top accented with a shaped sterling handle and the front with a pique sterling ovoid medallion fitted with two interior lidded

compartments, fully foiled and designed to raise and lower simultaneously with the tea level and with one compartment for green tea and the other for black, the whole raised on a bone veneered plinth

Height: 20"; Width: 26"; Depth: 18 1/4"



England 3299 M00571

A Large Late 18th Century French Niello Valuable Box inscribed "D'Apres Saint Albin", depicting the account of the Royal Court of Louis XV by the Comtesse de Genlis, Stephanie-Felicite Du Crest Saint-Aubin, the educator and memoir writer of



C. MARIANI ANTIQUES RESTORATION & CUSTOM

1301 Harrison Street San Francisco CA 94103
www.cmarianiantiques.com

Contact: Claudio Mariani
claudio@cmarianiantiques.com Tel
415.541.7868 ~ Fax 415.487.3950

the upper classes in the late 18th c. and early 19th c., most famous for her quote "Familiarity is the most destructive of all iconoclasts". Niello is an etching used in decorating in black on silver and copper (and sometimes gold) that is somewhat related to champlevé work except that the effect is metallic rather than vitreous. Here the design of a court recital is engraved in exquisite detail into the fused copper and silver plates, the indented portions originally filled with a black matte alloy and became fused in the grooves creating the contrasting design

Height: 20"; Width: 26"; Depth: 18 1/4"



C. MARIANI ANTIQUES
RESTORATION & CUSTOM

1301 Harrison Street San Francisco CA 94103
www.cmarianiantiques.com

Contact: Claudio Mariani
claudio@cmarianiantiques.com Tel
415.541.7868 ~ Fax 415.487.3950



England 3299 M00571

An Unusually Large 1823 English Regency Chinese Export Black, Gold and Red Lacquered Tea Caddy, of octagonal shape, with each faceted side featuring a reserve with scholars and beauties on a garden terrace and auspicious zoomorphs accented with scrolling tendrils, the interior fitted with dual engraved tin compartments each with bone pulls and double seals, one for black tea and one for green, raised on winged

dragon feet and in superb condition

Height: 20"; Width: 26"; Depth: 18 1/4"



England 3299 M00571

An Unusually Large and Rare 19th Century English Regency Tortoiseshell Tea Caddy, with serpentine-shaped front and pagoda lid, featuring two interior compartments with a cut crystal sugar bowl, and accented with silver and bone



C. MARIANI ANTIQUES
RESTORATION & CUSTOM

1301 Harrison Street San Francisco CA 94103
www.cmarianiantiques.com

Contact: Claudio Mariani
claudio@cmarianiantiques.com Tel
415.541.7868 ~ Fax 415.487.3950

banding, all raised on flattened bun feet

Height: 20"; Width: 26"; Depth: 18 1/4"



England 3299 M00571

An English 19th Century Tortoiseshell Tea Caddy of Unusual Undulating Form, with sterling escutcheon and



C. MARIANI ANTIQUES RESTORATION & CUSTOM

1301 Harrison Street San Francisco CA 94103
www.cmarianiantiques.com

Contact: Claudio Mariani
claudio@cmarianiantiques.com Tel
415.541.7868 ~ Fax 415.487.3950

medallion, bone banding, and pewter stringing, fitted with two interior conforming compartments, one for green tea and one for black, all above a flaring crenelated skirt raised on flattened ball feet

Height: 20"; Width: 26"; Depth: 18 1/4"



C. MARIANI ANTIQUES RESTORATION & CUSTOM

1301 Harrison Street San Francisco CA 94103
www.cmarianiantiques.com

Contact: Claudio Mariani
claudio@cmarianiantiques.com Tel
415.541.7868 ~ Fax 415.487.3950



England 3299 M00571

A Rare 1840 Italian Empire Mahogany Sewing Box, the satinwood and ebony parquetry top of unusual “clamshell form” opening to reveal fitted compartments below the original mirror supported with ormolu accented bone corinthian columns below a



C. MARIANI ANTIQUES RESTORATION & CUSTOM

1301 Harrison Street San Francisco CA 94103
www.cmarianiantiques.com

Contact: Claudio Mariani
claudio@cmarianiantiques.com Tel
415.541.7868 ~ Fax 415.487.3950

delicate carved bone gallery, raised on two lyres above a
rectangular base containing one drawer with original key lock

Height: 20"; Width: 26"; Depth: 18 1/4"



England 3299 M00571



C. MARIANI ANTIQUES
RESTORATION & CUSTOM

1301 Harrison Street San Francisco CA 94103
www.cmarianiantiques.com

Contact: Claudio Mariani
claudio@cmarianiantiques.com Tel
415.541.7868 ~ Fax 415.487.3950

A Fine 19th Century Regency Jewelry Box, in mahogany with ebony banding, brass inlay and bone escutcheon.

Height: 20"; Width: 26"; Depth: 18 1/4"



England 3299 M00571



C. MARIANI ANTIQUES
RESTORATION & CUSTOM

1301 Harrison Street San Francisco CA 94103
www.cmarianiantiques.com

Contact: Claudio Mariani
claudio@cmarianiantiques.com Tel
415.541.7868 ~ Fax 415.487.3950

An Unusually Shaped 1820 English Tortoiseshell Tea Caddy with pagoda lid, silvered ball feet, pull and escutcheon, the top lifting to reveal bone banding surrounding two fitted subcompartments, one for green tea and one for black

Height: 20"; Width: 26"; Depth: 18 1/4"





C. MARIANI ANTIQUES
RESTORATION & CUSTOM

1301 Harrison Street San Francisco CA 94103
www.cmarianiantiques.com

Contact: Claudio Mariani
claudio@cmarianiantiques.com Tel
415.541.7868 ~ Fax 415.487.3950

England 3299 M00571

An English Regency Tortoiseshell Tea Caddy of Unusual Sarcophagus Shape, with pagoda lid, two fitted interior compartments for green and black tea, pewter stringing, silver escutcheon, and a wonderfully exaggerated apron raised on ball feet

Height: 20"; Width: 26"; Depth: 18 1/4"



C. MARIANI ANTIQUES
RESTORATION & CUSTOM

1301 Harrison Street San Francisco CA 94103
www.cmarianiantiques.com

Contact: Claudio Mariani
claudio@cmarianiantiques.com Tel
415.541.7868 ~ Fax 415.487.3950



England 3299 M00571

A Rare 19th Century English Regency Macassar Ebony Jewelry Box now fitted as a Side Table, the box with brass inlaid stringing and raised on a later base

Height: 20"; Width: 26"; Depth: 18 1/4"



England 3299 M00571

A Stately Regency Neoclassical Tea Caddy, with unusual “support columns, convex interior lids, pagoda exterior lid, sterling accents, bone banding, and pewter stringing

Height: 20"; Width: 26"; Depth: 18 1/4"



England 3299 M00571

A Sophisticated First Quarter 19th Century English Regency Casket-Shaped Tortoiseshell Tea Caddy with bone stringing and banding, pewter and sterling silver detailing, the

whole raised on bone ball feet

Height: 20"; Width: 26"; Depth: 18 1/4"



England 3299 M00571

An Exceptional Late 19th Century Straw Marquetry Jewelry Box, most likely created by French nuns who perfected the art in the late 18th and 19th centuries, the exterior depicting a watch tower on the Port de Le Havre, with a French galleon in



C. MARIANI ANTIQUES
RESTORATION & CUSTOM

1301 Harrison Street San Francisco CA 94103
www.cmarianiantiques.com

Contact: Claudio Mariani
claudio@cmarianiantiques.com Tel
415.541.7868 ~ Fax 415.487.3950

view, and the interior fitted with compartments and drawers
depicting village scenes and a military trophy

Height: 20"; Width: 26"; Depth: 18 1/4"



England 3299 M00571

An Unusual Double Bombé Mid-19th Century English



C. MARIANI ANTIQUES
RESTORATION & CUSTOM

1301 Harrison Street San Francisco CA 94103
www.cmarianiantiques.com

Contact: Claudio Mariani
claudio@cmarianiantiques.com Tel
415.541.7868 ~ Fax 415.487.3950

Tortoiseshell Tea Caddy, with flared skirt and pagoda lid, embellished with silver and bone stringing, sterling escutcheon and plaque, and raised on bone flattened bun feet

Height: 20"; Width: 26"; Depth: 18 1/4"



England 3299 M00571



C. MARIANI ANTIQUES
RESTORATION & CUSTOM

1301 Harrison Street San Francisco CA 94103
www.cmarianiantiques.com

Contact: Claudio Mariani
claudio@cmarianiantiques.com Tel
415.541.7868 ~ Fax 415.487.3950

A 19th Century English Regency Blonde Tortoiseshell Tea Caddy inlaid with bone and silver stringing, the pagoda lid centered by a silver medallion above an unusual "waisted" rectangular base with concave plinth raised on ball feet

Height: 20"; Width: 26"; Depth: 18 1/4"





C. MARIANI ANTIQUES
RESTORATION & CUSTOM

1301 Harrison Street San Francisco CA 94103
www.cmarianiantiques.com

Contact: Claudio Mariani
claudio@cmarianiantiques.com Tel
415.541.7868 ~ Fax 415.487.3950

England 3299 M00571

A Sophisticated 19th Century Regency Bow Front Blonde Tortoiseshell Tea Caddy, with bone and silver inlaid stringing, silver escutcheon and matching medallion centering the pagoda lid, all raised on silvered ball feet

Height: 20"; Width: 26"; Depth: 18 1/4"



C. MARIANI ANTIQUES
RESTORATION & CUSTOM

1301 Harrison Street San Francisco CA 94103
www.cmarianiantiques.com

Contact: Claudio Mariani
claudio@cmarianiantiques.com Tel
415.541.7868 ~ Fax 415.487.3950



England 3299 M00571

A 19th Century English Tortoiseshell Tea Caddy, the pagoda top opening to reveal two lidded compartments within a bombe form with canted corners, the whole raised on bone ball feet

Height: 20"; Width: 26"; Depth: 18 1/4"



England 3299 M00571

A 19th Century English Tortoiseshell Tea Caddy, the lid centered with a silver medallion and opening to reveal two lidded subcompartments, one for green tea and one for black, above a serpentine base raise on bone ball feet



C. MARIANI ANTIQUES RESTORATION & CUSTOM

1301 Harrison Street San Francisco CA 94103
www.cmarianiantiques.com

Contact: Claudio Mariani
claudio@cmarianiantiques.com Tel
415.541.7868 ~ Fax 415.487.3950

Height: 20"; Width: 26"; Depth: 18 1/4"



England 3299 M00571



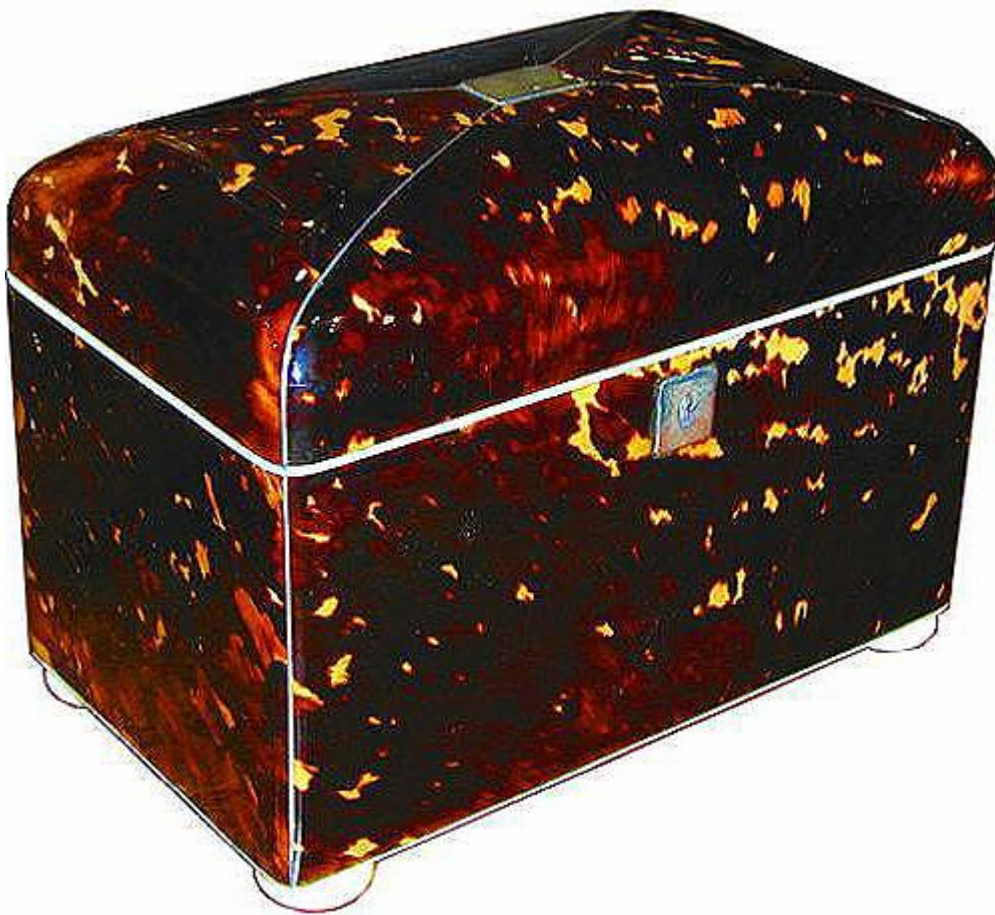
C. MARIANI ANTIQUES
RESTORATION & CUSTOM

1301 Harrison Street San Francisco CA 94103
www.cmarianiantiques.com

Contact: Claudio Mariani
claudio@cmarianiantiques.com Tel
415.541.7868 ~ Fax 415.487.3950

A Rare 18th Century English Pear Shaped Tea Caddy carved in pear wood

Height: 20"; Width: 26"; Depth: 18 1/4"



England 3299 M00571



C. MARIANI ANTIQUES
RESTORATION & CUSTOM

1301 Harrison Street San Francisco CA 94103
www.cmarianiantiques.com

Contact: Claudio Mariani
claudio@cmarianiantiques.com Tel
415.541.7868 ~ Fax 415.487.3950

A 19th Century English Regency Tortoiseshell Tea Caddy,
the domed lid quarter inlaid with pewter stringing and centered
by a silver medallion above a rectangular form fitted with two
lidded sub-compartments, one for green tea and one for black,
the whole raised on bone feet

Height: 20"; Width: 26"; Depth: 18 1/4"



England 3299 M00571

**A Rare 18th Century Italian Miniature Mechanical
Secrétaire**, the broken pediment top above two doors and three
drawers, the lower section with tambour top (that automatically
opens and closes by moving the top drawer) revealing a fitted



C. MARIANI ANTIQUES RESTORATION & CUSTOM

1301 Harrison Street San Francisco CA 94103
www.cmarianiantiques.com

Contact: Claudio Mariani
claudio@cmarianiantiques.com Tel
415.541.7868 ~ Fax 415.487.3950

gallery of smaller drawers above two long drawers, the whole raised on ball feet and retaining original green dye on portions of the marquetry

Height: 20"; Width: 26"; Depth: 18 1/4"



England 3299 M00571

A 19th Century Small Burl Elm Wood Case with clasp,



C. MARIANI ANTIQUES RESTORATION & CUSTOM

1301 Harrison Street San Francisco CA 94103
www.cmarianiantiques.com

Contact: Claudio Mariani
claudio@cmarianiantiques.com Tel
415.541.7868 ~ Fax 415.487.3950

conforming wooden hinges and a partitioned interior

Height: 20"; Width: 26"; Depth: 18 1/4"



England 3299 M00571



C. MARIANI ANTIQUES
RESTORATION & CUSTOM

1301 Harrison Street San Francisco CA 94103
www.cmarianiantiques.com

Contact: Claudio Mariani
claudio@cmarianiantiques.com Tel
415.541.7868 ~ Fax 415.487.3950

A Rare English Serpentine Tortoiseshell Tea Caddy

embellished with bone banding and inlaid pewter stringing with
an interior fitted with a single conforming lidded compartment

Height: 20"; Width: 26"; Depth: 18 1/4"





C. MARIANI ANTIQUES
RESTORATION & CUSTOM

1301 Harrison Street San Francisco CA 94103
www.cmarianiantiques.com

Contact: Claudio Mariani
claudio@cmarianiantiques.com Tel
415.541.7868 ~ Fax 415.487.3950

England 3299 M00571

A 19th Century English Regency Tortoiseshell Tea Caddy
with mother-of-pearl chinoiserie inlay, the pagoda top above a
shaped front case raised on silver ball feet, the interior with two
lidded compartments

Height: 20"; Width: 26"; Depth: 18 1/4"