



C. MARIANI ANTIQUES
RESTORATION & CUSTOM

1301 Harrison Street San Francisco CA 94103
www.cmarianiantiques.com

Contact: Claudio Mariani
claudio@cmarianiantiques.com Tel
415.541.7868 ~ Fax 415.487.3950



England 3320 M00572

A Rare 18th Century Bone and Tortoiseshell Tea Caddy,
the rectangular form with canted corners, accented with copper
lid pull and escutcheon and fitted with two elevated and
removable interior compartments with sliding lids

Height: 5"; Width: 7 1/4"; Depth: 4"



England 3320 M00572

A 19th Century Regency Tortoiseshell Tea Caddy with a pagoda lid, opening to reveal two lidded compartments above a bombé form with silver and bone accents, all above bone ball feet

Height: 5"; Width: 7 1/4"; Depth: 4"



C. MARIANI ANTIQUES RESTORATION & CUSTOM

1301 Harrison Street San Francisco CA 94103
www.cmarianiantiques.com

Contact: Claudio Mariani
claudio@cmarianiantiques.com Tel
415.541.7868 ~ Fax 415.487.3950



England 3320 M00572

A 19th Century Tortoiseshell Jewelry Box in the rectangular form with gracefully curving corners and detailed with silver stringing and silver accents.

Height: 5"; Width: 7 1/4"; Depth: 4"



England 3320 M00572

An Exquisite 19th Century English Tea Caddy in the rectangular form with pagoda lid, fitted with two intricately lidded interior compartments, all accented with silver banding and raised on brass ball feet.

Height: 5"; Width: 7 1/4"; Depth: 4"



C. MARIANI ANTIQUES
RESTORATION & CUSTOM

1301 Harrison Street San Francisco CA 94103
www.cmarianiantiques.com

Contact: Claudio Mariani
claudio@cmarianiantiques.com Tel
415.541.7868 ~ Fax 415.487.3950



England 3320 M00572

An English Regency Tortoiseshell Tea Caddy, in a rectangular and serpentine form, accented with silver and bone banding, the interior fitted with two lidded compartments, all raised on flattened bun feet

Height: 5"; Width: 7 1/4"; Depth: 4"



C. MARIANI ANTIQUES
RESTORATION & CUSTOM

1301 Harrison Street San Francisco CA 94103
www.cmarianiantiques.com

Contact: Claudio Mariani
claudio@cmarianiantiques.com Tel
415.541.7868 ~ Fax 415.487.3950



England 3320 M00572

A 19th Century English Regency Tortoiseshell Tea Caddy,
with pagoda lid and bombé form fitted with two lidded interior
compartments, one for green tea and the other for black,
embellished with pewter and bone banding, all raised on bone
flattened bun feet

Height: 5"; Width: 7 1/4"; Depth: 4"



England 3320 M00572

An Exceptional and Rare English Regency Pressed Tortoiseshell Tea Caddy, in the Neoclassical taste, the pagoda cover above a serpentine form, fitted with two lidded

compartments, the whole raised on bone ball feet

Height: 5"; Width: 7 1/4"; Depth: 4"



England 3320 M00572

An English 19th Century Tortoiseshell Tea Caddy of Unusual Undulating Form, with sterling escutcheon and medallion, bone banding fitted with two interior conforming



C. MARIANI ANTIQUES RESTORATION & CUSTOM

1301 Harrison Street San Francisco CA 94103
www.cmarianiantiques.com

Contact: Claudio Mariani
claudio@cmarianiantiques.com Tel
415.541.7868 ~ Fax 415.487.3950

compartments, one for green tea and one for black, all above a
flaring crenelated skirt

Height: 5"; Width: 7 1/4"; Depth: 4"



England 3320 M00572

A 19th Century English Regency Tortoiseshell Tea Caddy,
with pagoda lid centered with silver medallion, serpentine front,



C. MARIANI ANTIQUES
RESTORATION & CUSTOM

1301 Harrison Street San Francisco CA 94103
www.cmarianiantiques.com

Contact: Claudio Mariani
claudio@cmarianiantiques.com Tel
415.541.7868 ~ Fax 415.487.3950

ebony banding, silver escutcheon and stringing and the interior fitted with two lidded compartments

Height: 5"; Width: 7 1/4"; Depth: 4"



England 3320 M00572

A Unique 19th Century English Tortoiseshell Sewing Box,
the rectangular form with canted corners, the top centered by a
silver medallion with inscription, ebony banding, silver stringing



C. MARIANI ANTIQUES RESTORATION & CUSTOM

1301 Harrison Street San Francisco CA 94103
www.cmarianiantiques.com

Contact: Claudio Mariani
claudio@cmarianiantiques.com Tel
415.541.7868 ~ Fax 415.487.3950

and sides each adorned with distinctive ebony ring handles all
raised on bone bun feet

Height: 5"; Width: 7 1/4"; Depth: 4"





C. MARIANI ANTIQUES
RESTORATION & CUSTOM

1301 Harrison Street San Francisco CA 94103
www.cmarianiantiques.com

Contact: Claudio Mariani
claudio@cmarianiantiques.com Tel
415.541.7868 ~ Fax 415.487.3950

England 3320 M00572

A Late 18th Century English Sable Tortoiseshell Decagonal Tea Caddy, accented with pewter stringing and bone banding, the top accented with a shaped sterling handle and the front with a pique sterling ovoid medallion fitted with two interior lidded compartments, fully foiled and designed to raise and lower simultaneously with the tea level and with one compartment for green tea and the other for black, the whole raised on a bone veneered plinth

Height: 5"; Width: 7 1/4"; Depth: 4"



England 3320 M00572

An Unusually Large and Rare 19th Century English Regency Tortoiseshell Tea Caddy, with serpentine-shaped front and pagoda lid, featuring two interior compartments with a cut crystal sugar bowl, and accented with silver and bone banding, all raised on flattened bun feet

Height: 5"; Width: 7 1/4"; Depth: 4"



England 3320 M00572

An English 19th Century Tortoiseshell Tea Caddy of Unusual Undulating Form, with sterling escutcheon and medallion, bone banding, and pewter stringing, fitted with two interior conforming compartments, one for green tea and one for black, all above a flaring crenelated skirt raised on flattened ball feet



C. MARIANI ANTIQUES
RESTORATION & CUSTOM

1301 Harrison Street San Francisco CA 94103
www.cmarianiantiques.com

Contact: Claudio Mariani
claudio@cmarianiantiques.com Tel
415.541.7868 ~ Fax 415.487.3950

Height: 5"; Width: 7 1/4"; Depth: 4"



England 3320 M00572

An Unusually Shaped 1820 English Tortoiseshell Tea Caddy with pagoda lid, silvered ball feet, pull and escutcheon,



C. MARIANI ANTIQUES RESTORATION & CUSTOM

1301 Harrison Street San Francisco CA 94103
www.cmarianiantiques.com

Contact: Claudio Mariani
claudio@cmarianiantiques.com Tel
415.541.7868 ~ Fax 415.487.3950

the top lifting to reveal bone banding surrounding two fitted subcompartments, one for green tea and one for black

Height: 5"; Width: 7 1/4"; Depth: 4"



England 3320 M00572



C. MARIANI ANTIQUES
RESTORATION & CUSTOM

1301 Harrison Street San Francisco CA 94103
www.cmarianiantiques.com

Contact: Claudio Mariani
claudio@cmarianiantiques.com Tel
415.541.7868 ~ Fax 415.487.3950

An English Regency Tortoiseshell Tea Caddy of Unusual Sarcophagus Shape, with pagoda lid, two fitted interior compartments for green and black tea, pewter stringing, silver escutcheon, and a wonderfully exaggerated apron raised on ball feet

Height: 5"; Width: 7 1/4"; Depth: 4"





C. MARIANI ANTIQUES
RESTORATION & CUSTOM

1301 Harrison Street San Francisco CA 94103
www.cmarianiantiques.com

Contact: Claudio Mariani
claudio@cmarianiantiques.com Tel
415.541.7868 ~ Fax 415.487.3950

England 3320 M00572

**A Sophisticated First Quarter 19th Century English
Regency Casket-Shaped Tortoiseshell Tea Caddy** with bone
stringing and banding, pewter and sterling silver detailing, the
whole raised on bone ball feet

Height: 5"; Width: 7 1/4"; Depth: 4"





C. MARIANI ANTIQUES
RESTORATION & CUSTOM

1301 Harrison Street San Francisco CA 94103
www.cmarianiantiques.com

Contact: Claudio Mariani
claudio@cmarianiantiques.com Tel
415.541.7868 ~ Fax 415.487.3950

England 3320 M00572

An Unusual Double Bombé Mid-19th Century English Tortoiseshell Tea Caddy, with flared skirt and pagoda lid, embellished with silver and bone stringing, sterling escutcheon and plaque, and raised on bone flattened bun feet

Height: 5"; Width: 7 1/4"; Depth: 4"



C. MARIANI ANTIQUES
RESTORATION & CUSTOM

1301 Harrison Street San Francisco CA 94103
www.cmarianiantiques.com

Contact: Claudio Mariani
claudio@cmarianiantiques.com Tel
415.541.7868 ~ Fax 415.487.3950



England 3320 M00572

A Sophisticated 19th Century Regency Bow Front Blonde Tortoiseshell Tea Caddy, with bone and silver inlaid stringing, silver escutcheon and matching medallion centering the pagoda lid, all raised on silvered ball feet

Height: 5"; Width: 7 1/4"; Depth: 4"



C. MARIANI ANTIQUES
RESTORATION & CUSTOM

1301 Harrison Street San Francisco CA 94103
www.cmarianiantiques.com

Contact: Claudio Mariani
claudio@cmarianiantiques.com Tel
415.541.7868 ~ Fax 415.487.3950



England 3320 M00572

A 19th Century English Regency Blonde Tortoiseshell Tea Caddy inlaid with bone and silver stringing, the pagoda lid centered by a silver medallion above an unusual “waisted” rectangular base with concave plinth raised on ball feet



C. MARIANI ANTIQUES
RESTORATION & CUSTOM

1301 Harrison Street San Francisco CA 94103
www.cmarianiantiques.com

Contact: Claudio Mariani
claudio@cmarianiantiques.com Tel
415.541.7868 ~ Fax 415.487.3950

Height: 5"; Width: 7 1/4"; Depth: 4"



England 3320 M00572

A 19th Century English Regency Tortoiseshell Tea Caddy,



C. MARIANI ANTIQUES RESTORATION & CUSTOM

1301 Harrison Street San Francisco CA 94103
www.cmarianiantiques.com

Contact: Claudio Mariani
claudio@cmarianiantiques.com Tel
415.541.7868 ~ Fax 415.487.3950

the domed lid quarter inlaid with pewter stringing and centered by a silver medallion above a rectangular form fitted with two lidded sub-compartments, one for green tea and one for black, the whole raised on bone feet

Height: 5"; Width: 7 1/4"; Depth: 4"



England 3320 M00572



C. MARIANI ANTIQUES
RESTORATION & CUSTOM

1301 Harrison Street San Francisco CA 94103
www.cmarianiantiques.com

Contact: Claudio Mariani
claudio@cmarianiantiques.com Tel
415.541.7868 ~ Fax 415.487.3950

A 19th Century English Tortoiseshell Tea Caddy, the lid centered with a silver medallion and opening to reveal two lidded subcompartments, one for green tea and one for black, above a serpentine base raise on bone ball feet

Height: 5"; Width: 7 1/4"; Depth: 4"



C. MARIANI ANTIQUES
RESTORATION & CUSTOM

1301 Harrison Street San Francisco CA 94103
www.cmarianiantiques.com

Contact: Claudio Mariani
claudio@cmarianiantiques.com Tel
415.541.7868 ~ Fax 415.487.3950



England 3320 M00572

A Rare English Serpentine Tortoiseshell Tea Caddy

embellished with bone banding and inlaid pewter stringing with
an interior fitted with a single conforming lidded compartment

Height: 5"; Width: 7 1/4"; Depth: 4"



England 3320 M00572

A 19th Century English Regency Tortoiseshell Tea Caddy



C. MARIANI ANTIQUES RESTORATION & CUSTOM

1301 Harrison Street San Francisco CA 94103
www.cmarianiantiques.com

Contact: Claudio Mariani
claudio@cmarianiantiques.com Tel
415.541.7868 ~ Fax 415.487.3950

with mother-of-pearl chinoiserie inlay, the pagoda top above a shaped front case raised on silver ball feet, the interior with two lidded compartments

Height: 5"; Width: 7 1/4"; Depth: 4"



England 3320 M00572



C. MARIANI ANTIQUES
RESTORATION & CUSTOM

1301 Harrison Street San Francisco CA 94103
www.cmarianiantiques.com

Contact: Claudio Mariani
claudio@cmarianiantiques.com Tel
415.541.7868 ~ Fax 415.487.3950

An English 19th Century Tortoiseshell Tea Caddy, the
pagoda top above a block front form with lidded interior raised on
ball feet with silver and bone inlay

Height: 5"; Width: 7 1/4"; Depth: 4"



England 3320 M00572



C. MARIANI ANTIQUES
RESTORATION & CUSTOM

1301 Harrison Street San Francisco CA 94103
www.cmarianiantiques.com

Contact: Claudio Mariani
claudio@cmarianiantiques.com Tel
415.541.7868 ~ Fax 415.487.3950

**A 19th Century English Regency Pagoda Shaped
Tortoiseshell Inlaid Tea Caddy**, of faceted rectangular form,
the facets highlighted with silver stringing and the interior fitted
with two lidded compartments, one for black tea and one for
green, all raised on bone bun feet

Height: 5"; Width: 7 1/4"; Depth: 4"



C. MARIANI ANTIQUES
RESTORATION & CUSTOM

1301 Harrison Street San Francisco CA 94103
www.cmarianiantiques.com

Contact: Claudio Mariani
claudio@cmarianiantiques.com Tel
415.541.7868 ~ Fax 415.487.3950



England 3320 M00572

A 19th Century English Regency Tortoiseshell Tea Caddy,
the pagoda top above a rectangular serpentine-form with silver
stringing, the interior fitted with two compartments all raise on
bone bun feet

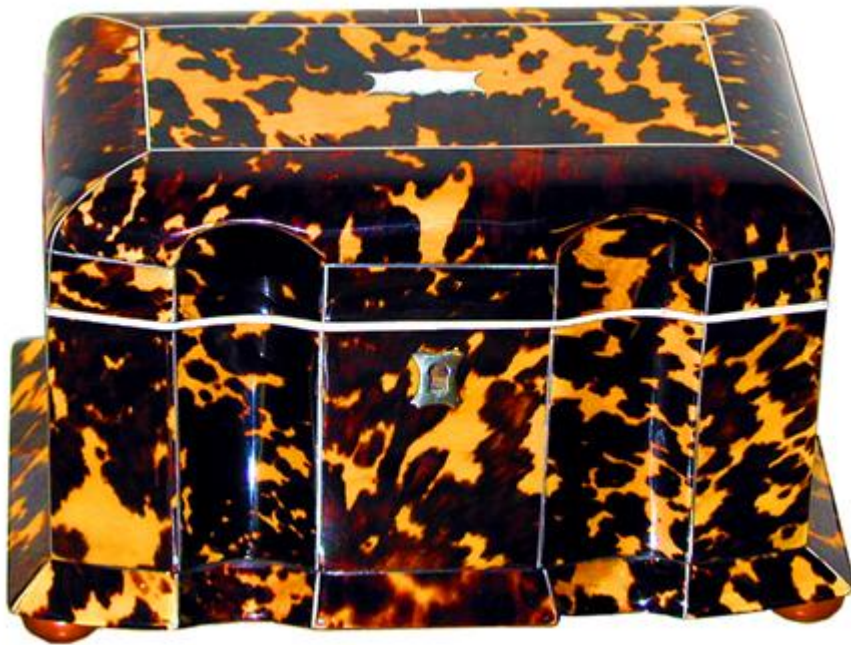
Height: 5"; Width: 7 1/4"; Depth: 4"



C. MARIANI ANTIQUES
RESTORATION & CUSTOM

1301 Harrison Street San Francisco CA 94103
www.cmarianiantiques.com

Contact: Claudio Mariani
claudio@cmarianiantiques.com Tel
415.541.7868 ~ Fax 415.487.3950



England 3320 M00572

A Fine 19th Century English Regency Tortoiseshell Tea Caddy, rectangular shaped form with canted corners, the interior fitted with two lidded compartments accented with silver and bone banding and raised on flattened bun feet

Height: 5"; Width: 7 1/4"; Depth: 4"



C. MARIANI ANTIQUES
RESTORATION & CUSTOM

1301 Harrison Street San Francisco CA 94103
www.cmarianiantiques.com

Contact: Claudio Mariani
claudio@cmarianiantiques.com Tel
415.541.7868 ~ Fax 415.487.3950



England 3320 M00572

A 19th Century English Regency Tortoiseshell Tea Caddy,
with a rectangular-shaped form and canted corners with pagoda
cover and interior with two lidded compartments, accented with
silver and bone banding, all raised on bun feet

Height: 5"; Width: 7 1/4"; Depth: 4"



England 3320 M00572

A 19th Century English Regency Tortoiseshell Tea Caddy,
in a rectangular and serpentine shaped form, accented with silver
and bone banding, all raised on flattened bun feet

Height: 5"; Width: 7 1/4"; Depth: 4"



England 3320 M00572

A 19th Century English Regency Tortoiseshell Tea Caddy,



C. MARIANI ANTIQUES RESTORATION & CUSTOM

1301 Harrison Street San Francisco CA 94103
www.cmarianiantiques.com

Contact: Claudio Mariani
claudio@cmarianiantiques.com Tel
415.541.7868 ~ Fax 415.487.3950

with a rectangular-shaped form and serpentine front, the cover embellished with intertwined mother-of-pearl floral marquetry and accented with silver and bone banding, all raised on flattened bun feet

Height: 5"; Width: 7 1/4"; Depth: 4"





C. MARIANI ANTIQUES
RESTORATION & CUSTOM

1301 Harrison Street San Francisco CA 94103
www.cmarianiantiques.com

Contact: Claudio Mariani
claudio@cmarianiantiques.com Tel
415.541.7868 ~ Fax 415.487.3950

England 3320 M00572

A 19th Century English Regency Tortoiseshell Tea Caddy,
in a rectangular shaped form with a pagoda cover fitted with a
copper-lined interior, accented with silver and bone banding, all
raised on carved bone ball feet

Height: 5"; Width: 7 1/4"; Depth: 4"





C. MARIANI ANTIQUES
RESTORATION & CUSTOM

1301 Harrison Street San Francisco CA 94103
www.cmarianiantiques.com

Contact: Claudio Mariani
claudio@cmarianiantiques.com Tel
415.541.7868 ~ Fax 415.487.3950

England 3320 M00572

A 19th Century English Regency Tortoiseshell Tea Caddy,
with serpentine form the interior fitted with two lidded
compartment overall embellished with sterling and bone banding
Height: 5"; Width: 7 1/4"; Depth: 4"