



# C. MARIANI ANTIQUES RESTORATION & CUSTOM

1301 Harrison Street San Francisco CA 94103  
[www.cmarianiantiques.com](http://www.cmarianiantiques.com)

Contact: Claudio Mariani  
[claudio@cmarianiantiques.com](mailto:claudio@cmarianiantiques.com) Tel  
415.541.7868 ~ Fax 415.487.3950





C. MARIANI ANTIQUES  
RESTORATION & CUSTOM

---

1301 Harrison Street San Francisco CA 94103  
[www.cmarianiantiques.com](http://www.cmarianiantiques.com)

Contact: Claudio Mariani  
[claudio@cmarianiantiques.com](mailto:claudio@cmarianiantiques.com) Tel  
415.541.7868 ~ Fax 415.487.3950

Italy 3473 M00003

**A Pair of 18th Century Italian Giltwood Mirrors,** the original mercury plates mounted in frames crested with gryphons flanked by trailing garlands at the corners and with a foliate swags centering the base rail

Height: 34"; Width: 18 3/4"

---



Italy 3473 M00003

**An 18th Century Italian Rococo Giltwood Pier Mirror,**  
crested with acanthus leaves and flowers above vining and  
rocaille motifs

Height: 34"; Width: 18 3/4"

---



Italy 3473 M00003



C. MARIANI ANTIQUES  
RESTORATION & CUSTOM

---

1301 Harrison Street San Francisco CA 94103  
[www.cmarianiantiques.com](http://www.cmarianiantiques.com)

Contact: Claudio Mariani  
[claudio@cmarianiantiques.com](mailto:claudio@cmarianiantiques.com) Tel  
415.541.7868 ~ Fax 415.487.3950

**An Elegant 18th Century Italian Luccan Carved Giltwood Mirror**, with intricate floral and foliate motifs and surmounted by a floral spray and retaining its original mercury glass plate

Height: 34"; Width: 18 3/4"

---





# C. MARIANI ANTIQUES RESTORATION & CUSTOM

1301 Harrison Street San Francisco CA 94103  
[www.cmarianiantiques.com](http://www.cmarianiantiques.com)

Contact: Claudio Mariani  
[claudio@cmarianiantiques.com](mailto:claudio@cmarianiantiques.com) Tel  
415.541.7868 ~ Fax 415.487.3950



Italy 3473 M00003

**An 18th Century Italian Transitional Rococo Giltwood Mirror** retaining multiple original mercury glass plates and embellished with C and S-scrolls along with rocaille motifs



# C. MARIANI ANTIQUES RESTORATION & CUSTOM

1301 Harrison Street San Francisco CA 94103  
[www.cmarianiantiques.com](http://www.cmarianiantiques.com)

Contact: Claudio Mariani  
[claudio@cmarianiantiques.com](mailto:claudio@cmarianiantiques.com) Tel  
415.541.7868 ~ Fax 415.487.3950

Height: 34"; Width: 18 3/4"



Italy 3473 M00003



C. MARIANI ANTIQUES  
RESTORATION & CUSTOM

1301 Harrison Street San Francisco CA 94103  
www.cmarianiantiques.com

Contact: Claudio Mariani  
claudio@cmarianiantiques.com Tel  
415.541.7868 ~ Fax 415.487.3950

**A Pair of 18th Century Giltwood Florentine Mirrors,** with two candle arms emanating from the base, and the frames embellished with high rococo carved acanthus leaf motifs

Height: 34"; Width: 18 3/4"



Italy 3473 M00003





C. MARIANI ANTIQUES  
RESTORATION & CUSTOM

---

1301 Harrison Street San Francisco CA 94103  
[www.cmarianiantiques.com](http://www.cmarianiantiques.com)

Contact: Claudio Mariani  
[claudio@cmarianiantiques.com](mailto:claudio@cmarianiantiques.com) Tel  
415.541.7868 ~ Fax 415.487.3950

**A Pair of 19th Century Bra de Lumiere Rococo Giltwood Mirrors**, elaborate rocaille cartouche frames surrounding original mirror plates and issuing two candle arms at the base

Height: 34"; Width: 18 3/4"

---



# C. MARIANI ANTIQUES RESTORATION & CUSTOM

1301 Harrison Street San Francisco CA 94103  
www.cmarianiantiques.com

Contact: Claudio Mariani  
claudio@cmarianiantiques.com Tel  
415.541.7868 ~ Fax 415.487.3950



Italy 3473 M00003

**A French 18th Century Louis XVI Giltwood Neoclassical Mirror**, carved with trailing husks, crested with a trophy centered by a pair of kissing doves and retaining its original mercury plates

Height: 34"; Width: 18 3/4"



Italy 3473 M00003

**A Late 18th Century Italian Neoclassical Giltwood Over door/Over Mantle Mirror** crested with a floral and foliate motif and flanked by pot de feu urns with cascading swags above a beaded and roped edge above lobed lower corners

Height: 34"; Width: 18 3/4"



# C. MARIANI ANTIQUES RESTORATION & CUSTOM

---

1301 Harrison Street San Francisco CA 94103  
[www.cmarianiantiques.com](http://www.cmarianiantiques.com)

Contact: Claudio Mariani  
[claudio@cmarianiantiques.com](mailto:claudio@cmarianiantiques.com) Tel  
415.541.7868 ~ Fax 415.487.3950

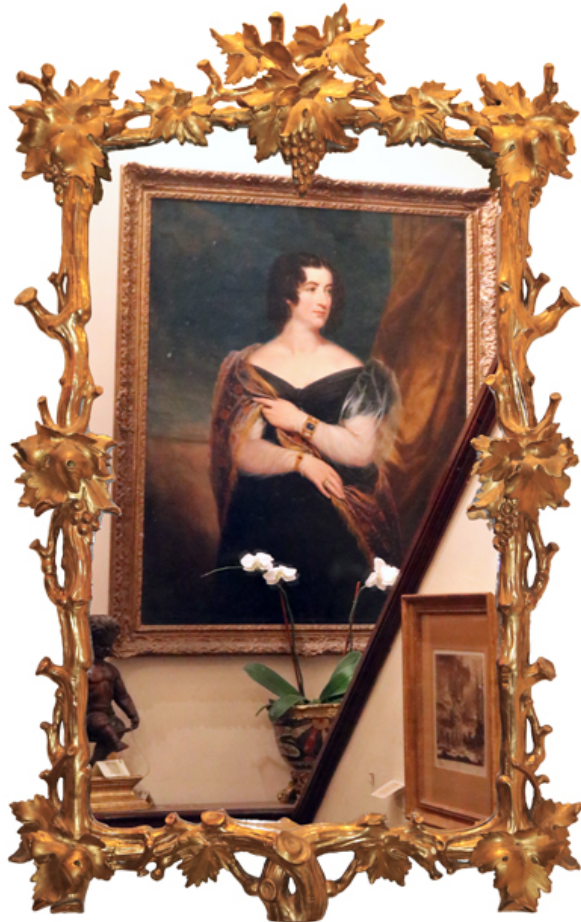
---



# C. MARIANI ANTIQUES RESTORATION & CUSTOM

1301 Harrison Street San Francisco CA 94103  
[www.cmarianiantiques.com](http://www.cmarianiantiques.com)

Contact: Claudio Mariani  
[claudio@cmarianiantiques.com](mailto:claudio@cmarianiantiques.com) Tel  
415.541.7868 ~ Fax 415.487.3950







C. MARIANI ANTIQUES  
RESTORATION & CUSTOM

---

1301 Harrison Street San Francisco CA 94103  
www.cmarianiantiques.com

Contact: Claudio Mariani  
claudio@cmarianiantiques.com Tel  
415.541.7868 ~ Fax 415.487.3950

Italy 3473 M00003

**A Late 18th Century Rococo Giltwood Console and Mirror Set,** both elaborately carved with thick fruited vining and with the console top inset with verde issori marble and raised on a stepped and shaped base

Height: 34"; Width: 18 3/4"

---



Italy 3473 M00003

**A Pair of Late 18th Century Italian Louis XVI Giltwood Mirrors** retaining their original mercury plates and crested with



## C. MARIANI ANTIQUES RESTORATION & CUSTOM

---

1301 Harrison Street San Francisco CA 94103  
[www.cmarianiantiques.com](http://www.cmarianiantiques.com)

Contact: Claudio Mariani  
[claudio@cmarianiantiques.com](mailto:claudio@cmarianiantiques.com) Tel  
415.541.7868 ~ Fax 415.487.3950

ribband bows and intricate acanthus detailing with the leaves on one side matching the reverse detailing on the other, the whole surrounded by a guilloche border above neoclassical pier "feet"

Height: 34"; Width: 18 3/4"

---



Italy 3473 M00003

**A Late 18th Century Italian Neoclassical Giltwood Mirror**

crested by an eagle with a trailing husk garland in its beak  
flanked by urn finials above a guilloche motif, Grecian profiles,  
scrolling acanthus leaves, and Greek key pattern accents



# C. MARIANI ANTIQUES RESTORATION & CUSTOM

---

1301 Harrison Street San Francisco CA 94103  
[www.cmarianiantiques.com](http://www.cmarianiantiques.com)

Contact: Claudio Mariani  
[claudio@cmarianiantiques.com](mailto:claudio@cmarianiantiques.com) Tel  
415.541.7868 ~ Fax 415.487.3950

Height: 34"; Width: 18 3/4"

---



Italy 3473 M00003





C. MARIANI ANTIQUES  
RESTORATION & CUSTOM

---

1301 Harrison Street San Francisco CA 94103  
[www.cmarianiantiques.com](http://www.cmarianiantiques.com)

Contact: Claudio Mariani  
[claudio@cmarianiantiques.com](mailto:claudio@cmarianiantiques.com) Tel  
415.541.7868 ~ Fax 415.487.3950

**An 18th Century Rococo Giltwood Mirror**, crested with a vase filled with flowers and holding suspended garlands cascading down the sides and raised on shaped piers centered with a stylized acanthus spray

Height: 34"; Width: 18 3/4"

---



# C. MARIANI ANTIQUES RESTORATION & CUSTOM

1301 Harrison Street San Francisco CA 94103  
[www.cmarianiantiques.com](http://www.cmarianiantiques.com)

Contact: Claudio Mariani  
[claudio@cmarianiantiques.com](mailto:claudio@cmarianiantiques.com) Tel  
415.541.7868 ~ Fax 415.487.3950



Italy 3473 M00003



C. MARIANI ANTIQUES  
RESTORATION & CUSTOM

---

1301 Harrison Street San Francisco CA 94103  
[www.cmarianiantiques.com](http://www.cmarianiantiques.com)

Contact: Claudio Mariani  
[claudio@cmarianiantiques.com](mailto:claudio@cmarianiantiques.com) Tel  
415.541.7868 ~ Fax 415.487.3950

**A Pair of Rococo Venetian Giltwood Mirrors**, each comprised of a main mirror below an accent mirror in the cresting and creating dramatic lighting with a pair of scarlet Murano glass candleholders at the base

Height: 34"; Width: 18 3/4"

---



# C. MARIANI ANTIQUES RESTORATION & CUSTOM

1301 Harrison Street San Francisco CA 94103  
[www.cmarianiantiques.com](http://www.cmarianiantiques.com)

Contact: Claudio Mariani  
[claudio@cmarianiantiques.com](mailto:claudio@cmarianiantiques.com) Tel  
415.541.7868 ~ Fax 415.487.3950



Italy 3473 M00003

**A 19th Century Italian Meuble de Style Rococo Giltwood Mirror** with shaped looking glass with fretted and stylized acanthus, floral and rocaille frame



# C. MARIANI ANTIQUES RESTORATION & CUSTOM

1301 Harrison Street San Francisco CA 94103  
[www.cmarianiantiques.com](http://www.cmarianiantiques.com)

Contact: Claudio Mariani  
[claudio@cmarianiantiques.com](mailto:claudio@cmarianiantiques.com) Tel  
415.541.7868 ~ Fax 415.487.3950

Height: 34"; Width: 18 3/4"



Italy 3473 M00003





C. MARIANI ANTIQUES  
RESTORATION & CUSTOM

---

1301 Harrison Street San Francisco CA 94103  
[www.cmarianiantiques.com](http://www.cmarianiantiques.com)

Contact: Claudio Mariani  
[claudio@cmarianiantiques.com](mailto:claudio@cmarianiantiques.com) Tel  
415.541.7868 ~ Fax 415.487.3950

**A 17th Century Italian Ebonized Mirror Inlaid with Bone**  
stringing and arabesques along with crimson and azure  
cabochons surrounding a later beveled mirror plate with a stellate  
etched motif

Height: 34"; Width: 18 3/4"

---



Italy 3473 M00003

**An 18th Century French Louis XV Style Silver Gilt Trumeau Mirror** with a painted panel of a landscape setting above a scrolling giltwood border standing proud of the frame and crested with stylized shells, all inside a perimeter mirror border and

retaining original mercury glass plates

Height: 34"; Width: 18 3/4"





C. MARIANI ANTIQUES  
RESTORATION & CUSTOM

1301 Harrison Street San Francisco CA 94103  
www.cmarianiantiques.com

Contact: Claudio Mariani  
claudio@cmarianiantiques.com Tel  
415.541.7868 ~ Fax 415.487.3950

---

Italy 3473 M00003

**An 18th Century English Black and Gold Chinoiserie  
Adjustable Vanity Mirror** with its original mirror plate above  
two sets of serpentine double drawers, two with locks and raised  
on incurved "Chinese" bracket feet

Height: 34"; Width: 18 3/4"

---



Italy 3473 M00003

**A Dramatic 18th Century Luccan Polychrome and Parcel-Gilt Pier Mirror** retaining its original mercury glass plate mounted in a fretted neoclassical frame crested with ebonized pine cone finials above a colonnade of palmettes flanked by





## C. MARIANI ANTIQUES RESTORATION & CUSTOM

---

1301 Harrison Street San Francisco CA 94103  
[www.cmarianiantiques.com](http://www.cmarianiantiques.com)

Contact: Claudio Mariani  
[claudio@cmarianiantiques.com](mailto:claudio@cmarianiantiques.com) Tel  
415.541.7868 ~ Fax 415.487.3950

hanging swags above a centered acanthus and rosette motif  
flanked by conforming pillar "feet"

Height: 34"; Width: 18 3/4"

---





C. MARIANI ANTIQUES  
RESTORATION & CUSTOM

---

1301 Harrison Street San Francisco CA 94103  
www.cmarianiantiques.com

Contact: Claudio Mariani  
claudio@cmarianiantiques.com Tel  
415.541.7868 ~ Fax 415.487.3950

Italy 3473 M00003

**An 18th Century High Rococo Italian Giltwood Mirror,** with two separate plates surrounded by gold scrolling acanthus leaves in a whimsical asymmetrical pattern

Height: 34"; Width: 18 3/4"

---



# C. MARIANI ANTIQUES RESTORATION & CUSTOM

1301 Harrison Street San Francisco CA 94103  
www.cmarianiantiques.com

Contact: Claudio Mariani  
claudio@cmarianiantiques.com Tel  
415.541.7868 ~ Fax 415.487.3950



Italy 3473 M00003

**An Octagonal 18th Century Italian Giltwood Mirror,** with fine rinceau carving details, the two original mirror plates, and with much of their mercury gilding intact



## C. MARIANI ANTIQUES RESTORATION & CUSTOM

---

1301 Harrison Street San Francisco CA 94103  
[www.cmarianiantiques.com](http://www.cmarianiantiques.com)

Contact: Claudio Mariani  
[claudio@cmarianiantiques.com](mailto:claudio@cmarianiantiques.com) Tel  
415.541.7868 ~ Fax 415.487.3950

Height: 34"; Width: 18 3/4"

---



Italy 3473 M00003



C. MARIANI ANTIQUES  
RESTORATION & CUSTOM

---

1301 Harrison Street San Francisco CA 94103  
[www.cmarianiantiques.com](http://www.cmarianiantiques.com)

Contact: Claudio Mariani  
[claudio@cmarianiantiques.com](mailto:claudio@cmarianiantiques.com) Tel  
415.541.7868 ~ Fax 415.487.3950

**A French Giltwood Transitional Louis XV to Louis XVI  
Mirror** with an elaborate carved cresting comprised of a  
mandolin amid rocaille scrolling and foliate motifs

Height: 34"; Width: 18 3/4"

---





# C. MARIANI ANTIQUES RESTORATION & CUSTOM

1301 Harrison Street San Francisco CA 94103  
[www.cmarianiantiques.com](http://www.cmarianiantiques.com)

Contact: Claudio Mariani  
[claudio@cmarianiantiques.com](mailto:claudio@cmarianiantiques.com) Tel  
415.541.7868 ~ Fax 415.487.3950



Italy 3473 M00003

**An Oval 19th Century French Gilt Mirror**, the wood frame carved with a foliate design surrounding a plate glass and crested with ribband motifs



# C. MARIANI ANTIQUES RESTORATION & CUSTOM

1301 Harrison Street San Francisco CA 94103  
[www.cmarianiantiques.com](http://www.cmarianiantiques.com)

Contact: Claudio Mariani  
[claudio@cmarianiantiques.com](mailto:claudio@cmarianiantiques.com) Tel  
415.541.7868 ~ Fax 415.487.3950

Height: 34"; Width: 18 3/4"



Italy 3473 M00003



C. MARIANI ANTIQUES  
RESTORATION & CUSTOM

---

1301 Harrison Street San Francisco CA 94103  
[www.cmarianiantiques.com](http://www.cmarianiantiques.com)

Contact: Claudio Mariani  
[claudio@cmarianiantiques.com](mailto:claudio@cmarianiantiques.com) Tel  
415.541.7868 ~ Fax 415.487.3950

**An 18th Century Piedmontese Giltwood Mirror,** with  
extensive fretted rocaille carving crested with an acanthus leaf  
cascade and edged in giltwood stringing and nine separate  
diminutive mirrors

Height: 34"; Width: 18 3/4"

---



# C. MARIANI ANTIQUES RESTORATION & CUSTOM

1301 Harrison Street San Francisco CA 94103  
www.cmarianiantiques.com

Contact: Claudio Mariani  
claudio@cmarianiantiques.com Tel  
415.541.7868 ~ Fax 415.487.3950



Italy 3473 M00003

**A Luccan Tuscany 18th Century Louis XVI Carved Giltwood Mirror** with original plate glass and crested with fretted anadem centered by a victory torch and draped with garlands that cascade down the sides and terminating in typically Luccan lions'



# C. MARIANI ANTIQUES RESTORATION & CUSTOM

---

1301 Harrison Street San Francisco CA 94103  
[www.cmarianiantiques.com](http://www.cmarianiantiques.com)

Contact: Claudio Mariani  
[claudio@cmarianiantiques.com](mailto:claudio@cmarianiantiques.com) Tel  
415.541.7868 ~ Fax 415.487.3950

paw ball and claw "feet" emanating from gilt acanthus foliage

Height: 34"; Width: 18 3/4"

---





# C. MARIANI ANTIQUES RESTORATION & CUSTOM

1301 Harrison Street San Francisco CA 94103  
[www.cmarianiantiques.com](http://www.cmarianiantiques.com)

Contact: Claudio Mariani  
[claudio@cmarianiantiques.com](mailto:claudio@cmarianiantiques.com) Tel  
415.541.7868 ~ Fax 415.487.3950







C. MARIANI ANTIQUES  
RESTORATION & CUSTOM

---

1301 Harrison Street San Francisco CA 94103  
www.cmarianiantiques.com

Contact: Claudio Mariani  
claudio@cmarianiantiques.com Tel  
415.541.7868 ~ Fax 415.487.3950

Italy 3473 M00003

**An Impressive 18th Century Louis XVI Gilt Trumeau Mirror**  
with pilaster columns detailed with ribband motifs, acanthus  
sprays, and flowers surrounding an unusual allegorical cartouche  
depicting musical instruments, buildings and articles of clothing  
Height: 34"; Width: 18 3/4"

---



C. MARIANI ANTIQUES  
RESTORATION & CUSTOM

1301 Harrison Street San Francisco CA 94103  
www.cmarianiantiques.com

Contact: Claudio Mariani  
claudio@cmarianiantiques.com Tel  
415.541.7868 ~ Fax 415.487.3950



Italy 3473 M00003

**An 18th Century Polychrome and Parcel-Gilt French Trumeau Mirror** with en camaieu oil on canvas of a pastoral scene above a mercury looking glass surrounded by rinceau and foliate designs and accented with fluted banding at the top and



# C. MARIANI ANTIQUES RESTORATION & CUSTOM

---

1301 Harrison Street San Francisco CA 94103  
[www.cmarianiantiques.com](http://www.cmarianiantiques.com)

Contact: Claudio Mariani  
[claudio@cmarianiantiques.com](mailto:claudio@cmarianiantiques.com) Tel  
415.541.7868 ~ Fax 415.487.3950

bottom

Height: 34"; Width: 18 3/4"

---



# C. MARIANI ANTIQUES RESTORATION & CUSTOM

1301 Harrison Street San Francisco CA 94103  
[www.cmarianiantiques.com](http://www.cmarianiantiques.com)

Contact: Claudio Mariani  
[claudio@cmarianiantiques.com](mailto:claudio@cmarianiantiques.com) Tel  
415.541.7868 ~ Fax 415.487.3950





C. MARIANI ANTIQUES  
RESTORATION & CUSTOM

---

1301 Harrison Street San Francisco CA 94103  
www.cmarianiantiques.com

Contact: Claudio Mariani  
claudio@cmarianiantiques.com Tel  
415.541.7868 ~ Fax 415.487.3950

Italy 3473 M00003

### **A Monumental Italian 18th Century Giltwood Mirror**

comprised of nine glasses secured by gilt rosettes and surrounded by exquisite rocaille carvings of scrolling acanthus leaves, stylized shells, and intricate vines, all in a breathtaking asymmetrical rococo motif, the whole raised on outscrolled feet and crested by a tripartite aigrette flanked by volutes affrontees

Height: 34"; Width: 18 3/4"

---





# C. MARIANI ANTIQUES RESTORATION & CUSTOM

1301 Harrison Street San Francisco CA 94103  
[www.cmarianiantiques.com](http://www.cmarianiantiques.com)

Contact: Claudio Mariani  
[claudio@cmarianiantiques.com](mailto:claudio@cmarianiantiques.com) Tel  
415.541.7868 ~ Fax 415.487.3950







C. MARIANI ANTIQUES  
RESTORATION & CUSTOM

---

1301 Harrison Street San Francisco CA 94103  
www.cmarianiantiques.com

Contact: Claudio Mariani  
claudio@cmarianiantiques.com Tel  
415.541.7868 ~ Fax 415.487.3950

Italy 3473 M00003

**An 18th Century Polychrome and Parcel-Gilt French Trumeau Mirror**, the upper portion a pastoral paysage oil on canvas of an idealized shepherdess with one of her sheep above a rectangular looking glass, the whole surrounded by a carved neoclassical giltwood frame

Height: 34"; Width: 18 3/4"

---



# C. MARIANI ANTIQUES RESTORATION & CUSTOM

1301 Harrison Street San Francisco CA 94103  
www.cmarianiantiques.com

Contact: Claudio Mariani  
claudio@cmarianiantiques.com Tel  
415.541.7868 ~ Fax 415.487.3950



Italy 3473 M00003

**A 19th Century Charles X Cheval Mirror** with a hidden drawer  
and lovely swan neck supports

Height: 34"; Width: 18 3/4"



# C. MARIANI ANTIQUES RESTORATION & CUSTOM

---

1301 Harrison Street San Francisco CA 94103  
[www.cmarianiantiques.com](http://www.cmarianiantiques.com)

Contact: Claudio Mariani  
[claudio@cmarianiantiques.com](mailto:claudio@cmarianiantiques.com) Tel  
415.541.7868 ~ Fax 415.487.3950

---



# C. MARIANI ANTIQUES RESTORATION & CUSTOM

1301 Harrison Street San Francisco CA 94103  
[www.cmarianiantiques.com](http://www.cmarianiantiques.com)

Contact: Claudio Mariani  
[claudio@cmarianiantiques.com](mailto:claudio@cmarianiantiques.com) Tel  
415.541.7868 ~ Fax 415.487.3950





C. MARIANI ANTIQUES  
RESTORATION & CUSTOM

---

1301 Harrison Street San Francisco CA 94103  
www.cmarianiantiques.com

Contact: Claudio Mariani  
claudio@cmarianiantiques.com Tel  
415.541.7868 ~ Fax 415.487.3950

Italy 3473 M00003

**A Remarkable Early 18th Century Italian Régence Parcel-Gilt and Polychrome Mirror** with mercury silvered mirror plates and featuring scrolling acanthus leaves surrounding the frame, ivy vines at top and bottom and accented with faux marble detailing

Height: 34"; Width: 18 3/4"

---



Italy 3473 M00003

**An 18th Century Dutch Louis XV Carved Oak Trumeau**, with grisaille on panel of winged putti with aviary and birds above a shaped and beveled mirror framed with abundant C and S scrolls amid rocaille and surmounted by a stepped cornice





## C. MARIANI ANTIQUES RESTORATION & CUSTOM

---

1301 Harrison Street San Francisco CA 94103  
[www.cmarianiantiques.com](http://www.cmarianiantiques.com)

Contact: Claudio Mariani  
[claudio@cmarianiantiques.com](mailto:claudio@cmarianiantiques.com) Tel  
415.541.7868 ~ Fax 415.487.3950

Height: 34"; Width: 18 3/4"

---



# C. MARIANI ANTIQUES RESTORATION & CUSTOM

1301 Harrison Street San Francisco CA 94103  
[www.cmarianiantiques.com](http://www.cmarianiantiques.com)

Contact: Claudio Mariani  
[claudio@cmarianiantiques.com](mailto:claudio@cmarianiantiques.com) Tel  
415.541.7868 ~ Fax 415.487.3950





C. MARIANI ANTIQUES  
RESTORATION & CUSTOM

---

1301 Harrison Street San Francisco CA 94103  
[www.cmarianiantiques.com](http://www.cmarianiantiques.com)

Contact: Claudio Mariani  
[claudio@cmarianiantiques.com](mailto:claudio@cmarianiantiques.com) Tel  
415.541.7868 ~ Fax 415.487.3950

Italy 3473 M00003

**An Ovoid 18th Century Polychrome and Parcel-Gilt Luccan Vanity Mirror**, embellished with scrolling acanthus leaves and raised on a faux lapis lazuli stepped plinth with gilt lions paw feet

Height: 34"; Width: 18 3/4"